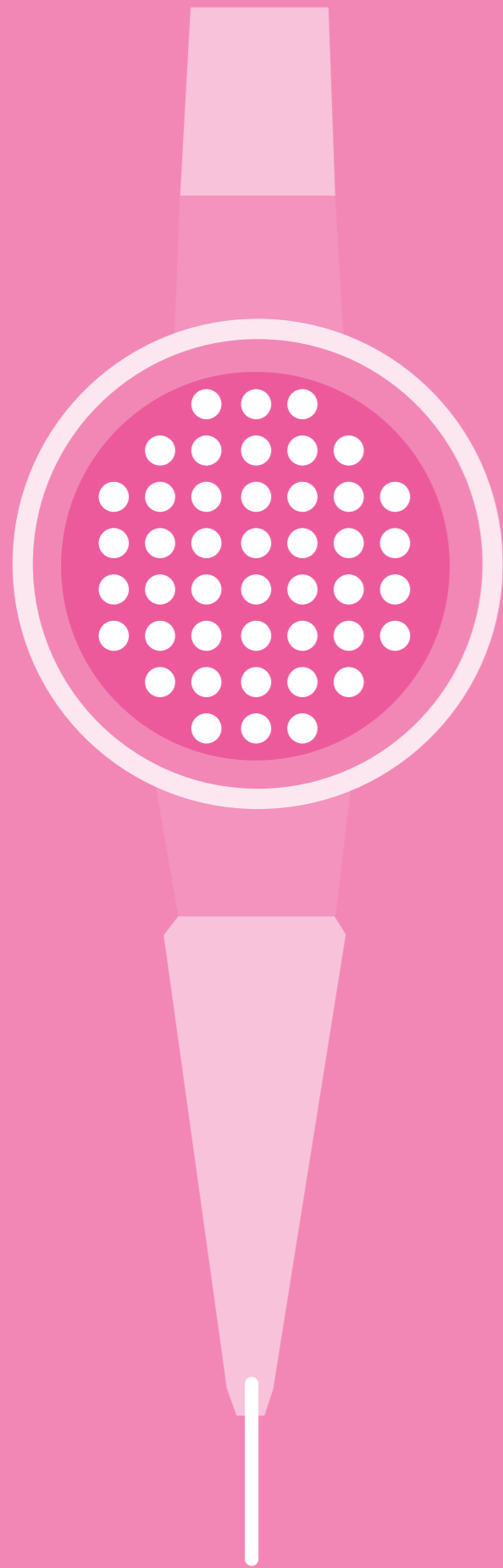


**NSK**



**FLASH** pearl

**ORAL HYGIENE PRODUCT**

**NSK**

Prophy-Mate **neo**

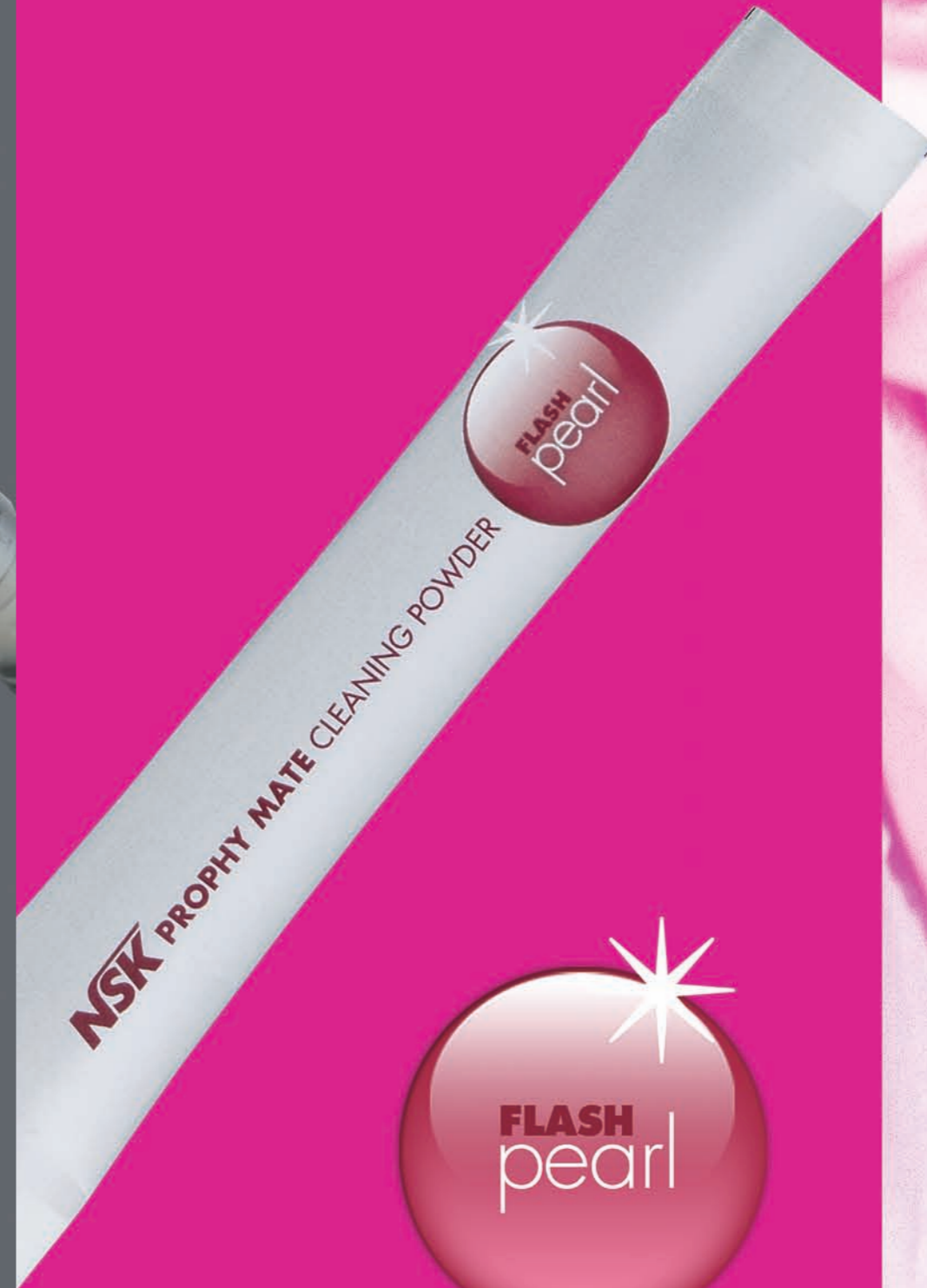


**ORAL HYGIENE PRODUCT**

For the perfect smile



**Prophy-Mate**  
**neo**





# Air Powered Tooth Polishing System

Enhanced Prophy-Mate **neo** unites form and functionality for easier use. Excellent weight balance and a lightweight, compact powder chamber make Prophy-Mate **neo** comfortable to hold, while the original NSK handpiece connection swivels 360° even under strong air pressure. Effortless operation shortens time for treatment of plaque and stains. 60° and 80° tips are available.

## Applications

- Removal of plaque and discolouration
- Cleaning
- Etching of enamel, dentine, and porcelain prior to bonding
- Preparation for pit and fissure sealant

## Advantages

- Sturdy and reliable for time savings
- Simple to operate
- Easy maintenance
- Quick connect to major turbine couplings
- Selectable choice of 60° and 80° tips

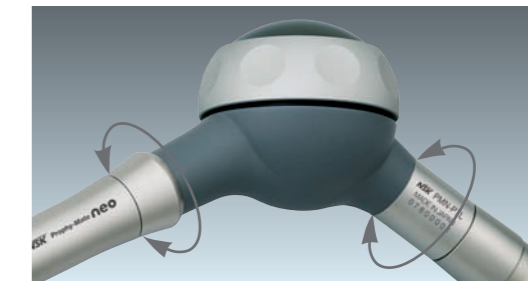


## Features



### Ergo-Comfort Design

Lightweight, compact design and well-considered weight balance enable easy handling for minimised hand and wrist fatigue, helping to ensure thorough treatment.



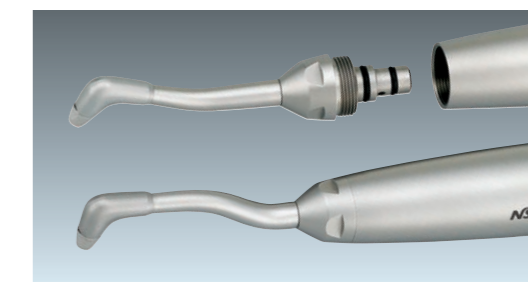
### Smooth, Easy 360° Swivel

Twin joints rotate smoothly 360° for easy operability, responding flexibly to minute fingertip movements with effortless adjustment of the tip angle.



### Simple One-touch Connection

New Prophy-Mate **neo** is designed for one-touch attachment directly to NSK couplings and major brands' air turbine handpiece couplings.



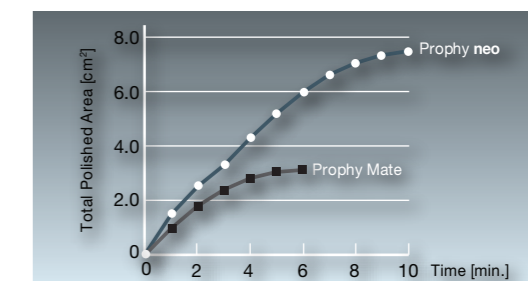
### Easy Detachable Nozzles with 60° and 80° tips

Selectable 60° and 80° tips maximise the cleaning ability. 60° tip works especially well for molar area and occluding surface and 80° tip for anterior tooth.



### Improved Polishing Power

With NSK original twin nozzles, greater polishing power is realised. With powerful jet, cleaning time is greatly shortened thus reduces treatment time.



### Stable Power

Thanks to the powerful jet of twin nozzles, Prophy-Mate **neo** embodies stable polishing power. Since the strong polishing power can be maintained, effective treatment is realised.

## Prophy-Mate neo Complete System

COUPLING TYPE	NSK	KaVo®	Sirona®	W&H®	Bien-Air®	M4	B2
G neo Gray	MODEL: PMNG-PTL-P ORDER CODE: Y135-029	PMNG-KV-P Y135-030	PMNG-SR-P Y135-031	PMNG-WH-P Y135-032	PMNG-BA-P Y135-033	PMNG-MM-P Y135-034	PMNG-B2-P Y135-035
	MODEL: PMNW-PTL-P ORDER CODE: Y135-036	PMNW-KV-P Y135-037	PMNW-SR-P Y135-038	PMNW-WH-P Y135-039	PMNW-BA-P Y135-040	PMNW-MM-P Y135-041	PMNW-B2-P Y135-042

\*Connect direct to these couplings

Complete System Includes • Prophy-Mate neo Handpiece with 60° and 80° tips • Cleaning brush, wire, and nozzle wires • 5 pcs. x 15 g sachets of FLASH pearl cleaning powder • Replacement nozzle head • Powder case cover • Wrench for Replacing Nozzle



## Sparkling Results Every Time

FLASH pearl, a cleaning powder for Prophy-Mate, is a spherical particulate powder designed to roll smoothly over tooth surfaces and penetrate all corners for rapid cleaning. The spherical shape of the powder granules lessens the likelihood of damage to teeth and soft tissue while removing stains, plaque and calculus quickly and safely. The base of FLASH pearl is natural tasting calcium, which contributes to low maintenance of Prophy-Mate by not forming masses that block the nozzle. The powder also reduces the acidity of oral fluids and inhibits bacterial development while decreasing plaque formation. This product is ideal for cleaning the teeth of patients sensitive to sodium bicarbonate or who suffer from high blood pressure.

\* Adverse reactions to this product are rare.

- Stylishly packaged in a handy, original box
- Contains 100 x 15 gms sachets



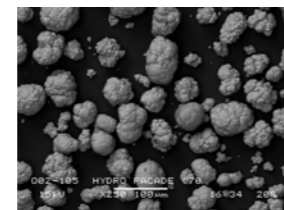
- 4 bottle packed in a box
- Comes with a measuring cup for your convenience
- Each bottle contains 300g

### Advantages

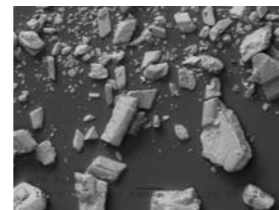
- Powerful cleaning
- Quick results
- Soft & Gentle
- Sodium-free natural taste
- Biodegradable and non-clogging
- Available for all other manufacturers' air polishing systems

#### Spherical granules remove residues from every corner

FLASH pearl granules are small and spherically shaped compared to particles of sodium bicarbonate powder. This means more contact and better access to clean all target areas effectively. A wider working angle also provides greater treatment safety.

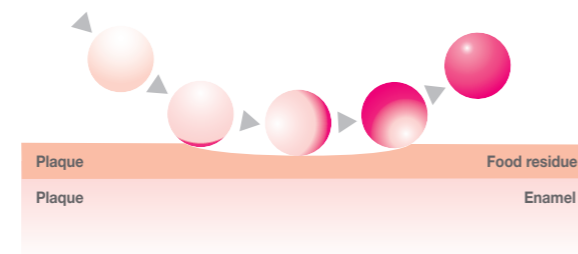


Calcium



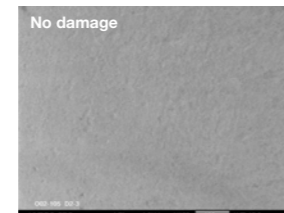
Conventional Sodium Bi-Carbonate powder

#### A New Effective Cleaning System!

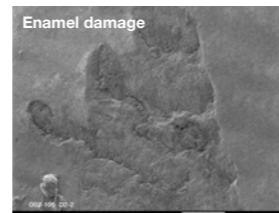


#### FLASH pearl roll smoothly over tooth surfaces

The spherical shape of FLASH pearl gives a smooth finish to tooth surfaces compared to the effects of the sharper-edged particles of sodium bicarbonate. FLASH pearl leave teeth sparkling without damaging dental enamel.

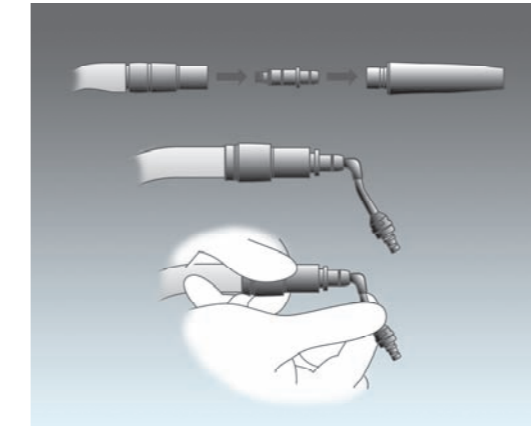


FLASH pearl avoids surface damage



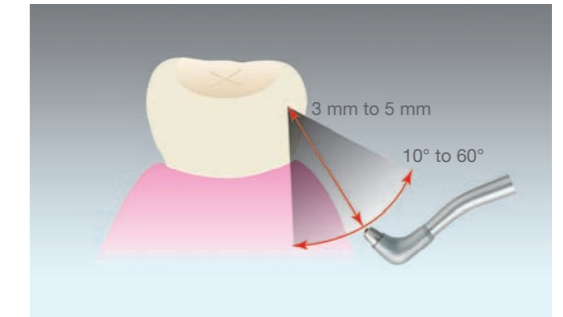
Conventional Bi-Carbonate is aggressive

### Easy to Maintenance





















With a blower nozzle, cleaning can be easily done and through cleaning prevents clogging. Blower nozzles for all types of couplings are available. Cleaning blush and wires are also enclosed.

### Recommended Nozzle Position



More effective cleaning can be achieved by maintaining the position of nozzle at angle between 10° and 60°, with 3-5 mm away from the tooth surface. That angle is different from that of conventional powders on the market: Rolling effect and adsorption of the spherical particles of FLASH pearl is optimized by holding the nozzle at this angle. The spray can be applied from the occluding surface to the cervical margin of the tooth.

### Spare Parts

<b>PMN-HP</b> ■ Handpiece with 60° nozzle  ■ Order code <b>T797-010</b>	<b>O-ring</b> ■ Front nozzle  ■ Order code <b>0312039 070</b>	<b>Gasket (neo)</b>  ■ Order code <b>T798-135</b>
<b>Powder Case Cover (neo)</b>  ■ Order code <b>T798-133</b>	<b>O-ring</b> ■ Rear nozzle  ■ Order code <b>0312029 070</b>	<b>Lubrication Oil</b>  ■ Order code <b>Z016-112</b>
<b>FLASH pearl</b> ■ 100 packages per box  ■ Order code <b>Y900-693</b>	<b>Nozzle 60° (neo)</b>  ■ Order code <b>T797-012</b>	<b>Cleaning Wire (neo)</b>  ■ Order code <b>T798-090</b>
<b>FLASH pearl (Bottle)</b> ■ Contains 300 gms x4  ■ Order code <b>Y900-698</b>	<b>Nozzle 80° (neo)</b>  ■ Order code <b>T797-013</b>	<b>Nozzle Wire (long) (neo)</b>  ■ Order code <b>T798-095</b>
<b>PTL O-ring Set</b> ■ Pack of 5  ■ Order code <b>Y900-580</b>	<b>Ring Wrench (neo)</b>  ■ Order code <b>T797-601</b>	<b>Nozzle Wire (short) (neo)</b>  ■ Order code <b>T798-091</b>
<b>PTL O-ring Set</b> ■ Pack of 3  ■ Order code <b>Y900-054</b>	<b>Blower Nozzle-PTL (neo)</b>  ■ Order code <b>T798-094</b>	<b>Cleaning Brush (neo)</b>  ■ Order code <b>T798-092</b>

### Prophy-Mate neo Specifications

■ <b>Handpiece with 80° nozzle</b> Length: 173.9 mm Weight: 134.9 g	■ <b>Handpiece with 60° nozzle</b> Length: 171.4 mm Weight: 134.8 g
--	--

<b>NAKANISHI INC.</b> www.nsk-inc.com 700 Shimohinata Kanuma-shi Tochigi 322-8666, Japan TEL: +61 (0)289-64-3380 FAX: +61 (0)289-62-5636	<b>NSK Europe GmbH</b> www.nsk-europe.de Westerbachstraße 58 D-60489 Frankfurt, Germany TEL: +49 (0)69 74 22 99 0 FAX: +49 (0)69 74 22 99 29	<b>NSK United Kingdom Ltd</b> www.nsk-uk.com Office 5, Gateway1000, Arlington Business Park, Whittle Way, Stevenage, SG1 2FP, UK TEL: +44 (0)1438 310670 FAX: +44 (0)1438 310671	<b>NSK Oceania Pty Ltd</b> www.nsk-inc.com Unit 22, 198-222 Young St, Waterloo, Sydney, NSW 2017, Australia TEL: +61 (0)2 8306 3000 FAX: +61 (0)2 8306 3030	<b>NSK America - Canadian Branch</b> www.nsk-inc.com 1054 Centre St. Suite 283 Thornhill, Ontario, Canada L4J 8E5 TEL/FAX: +1 905 780 6757 Toll Free: +1 866 780 6757	<b>NSK Middle East</b> www.nsk-inc.com Dubai Airport Free Zone, East Wing, Room 6EA-701, P.O.Box 54316 Dubai, U.A.E. TEL: +971 (0)4-299-9644 FAX: +971 (0)4-299-6664
--	--	--	---	---	--